

# PERFECT FIT™

SAN JUAN Fixture Series by Northwest LED

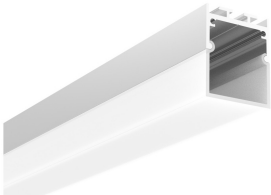
Job Name
Notes

**Professional quality, custom LED light fixtures without the custom price!**

## San Juan

053 (Surface Mount)  
053-PEN (Pendant)

1 13/32" wide x 1 3/4" tall  
Max length shown below



## Features

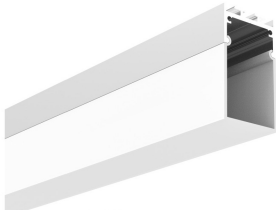
- ETL certified fixtures conform to UL Std 2108 and NEC requirements.
- Color Rendering Index (CRI) of 95 or above. Brings out true colors
- Dimmable when powered with an approved dimmable driver. (sold separately)
- Custom fabricated in the USA in lengths from 6 to 78 inches. (Lengths up to 118-inches available by special order - minimum orders may apply).
- Surface and Pendant styles available.
- 2-year warranty when powered with a Northwest LED approved driver. Ask for details.



## San Juan-EX

054 (Surface Mount)  
054-PEN (Pendant)

1 13/32" wide x 2 13/32" tall  
Max length shown below



## Mounting Options

### Surface mounted

Mounts using metal clips that screw into a solid surface and clip into a mounting groove on the back of the fixture.



### Pendant

Includes 2 aircraft cable sets that allows suspension heights from 3 to 78-inches.



Brightness Options	Voltage DC	Watts/ Ft.	LEDs/ Ft.	Lumen/ Ft.
Extra Bright (XB)	12/24	4.4	36	400
Dual Bright (DB)	24	5.9	72	700
Ultra Bright (UB)	24	5.5	39	763
Ultra Bright x 2 (2UB)	24	11	78	1526
Warm Dim (WD)	24	2.9	68	275
Warm Dim x 2 (2WD)	24	5.8	136	550

## Finish Options



## LED Color Options

27-18 k	Warm Dim 2700k dims to 1800k (24V only)
2700 k	Incandescent White
3000 k	Halogen White
4000 k	Natural White

## Ordering Information

PERFECT FIT™ San Juan Model 053/054 surface mount fixtures comes standard in "Silver" finish with a single 2 foot long lead wire and mounting clips. Pendant fixtures come standard with 2 sets of suspension hardware and 8 foot lead wire. Please specify the housing & mounting style, color temperature, brightness level and finished length for each fixture. Fixtures may *optionally* be ordered with extra long leads, or in custom configurations (square, rectangle etc.). Finish options other than silver generally require additional lead time. Please call for availability and pricing.

**Examples: LinF24-053f-PEN-DB-30k-78  
LinF24-054f-DB-40k-98-L10**

Model/Voltage	Lens	Brightness	Color Temp	Fixture Length In Inches	Options
LinF12/24-053 LinF12/24-054	f = frosted	XB=Extra Bright DB=Dual Bright UB=Ultra Bright 2UB = Dual Ultra Bright WD=Warm Dim 2WD=Dual Warm Dim	27k=2700k 40k=4000k 30k=3000k  27-18K 27-18K	6 (minimum) to 78 (maximum) *118 by special order	L=lead length (other than 2' std.)
LinF12/24-053 PEN LinF12/24-054 PEN	f	XB, DB, UB, 2UB / WD, 2WD	27k, 30k, 40k / 27-18k	6 to 78 *118 by special order	L= lead length (other than 8' std.)

Northwest LED

Linear LED lighting

1404 Riverside Dr., Ste. F, Mount Vernon, WA 98273 • 360.422.5387 • www.NorthwestLED.com • info@northwestLED.com