

PERFECT FIT™

VASHON Fixture Series by Northwest LED

Job Name
Notes

Professional quality, custom LED light fixtures without the custom price!

Vashon 1" wide x 1" tall
I04 (Surface Mount)
I04-PEN (Pendant)



Features

- ETL certified fixtures conform to UL Std 2108 and NEC requirements.
- Color Rendering Index (CRI) of 95 or above. Brings out true colors.
- Dimmable when powered with an approved dimmable driver. (sold separately)
- Custom fabricated in the USA in lengths from 6 to 118-inches.
- Surface and Pendant styles available.
- 2-year warranty when powered with a Northwest LED approved driver.



Vashon-EX 1" wide x 1 1/4" tall
I06 (Surface Mount)
I06-PEN (Pendant)

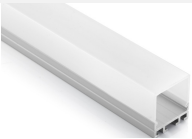


Vashon-LP 1" wide x 5/8" tall
I09 (Surface Mount)
I09-PEN (Pendant)



Brightness Options	Voltage DC	Watts/ Ft.	LEDs/ Ft.	Lumen/ Ft.
Extra Bright (XB)	12/24	4.4	36	400
Ultra Bright (UB)	24	5.5	39	763
Dual Bright (DB)	24	5.9	72	700
Warm Dim (WD)	24	2.9	68	275

Vashon-S 1" wide x 1 3/32" tall
I11S (Surface Mount)
I11S-PEN (Pendant)



Vashon-R 1 3/8" flange width
1" wide x 15/16" inset depth
I05 (Recessed)



Mounting Options

Surface mounted

Mounts using metal clips that attach to a solid surface and clip into a groove on the back of the fixture.



Pendant

Includes 2 stainless steel suspension wire sets that allows adjustable suspension heights from 3 to 78-inches.



Recessed

Includes spring clips to allow mounting securely in ceiling installations.



LED Color Options

27-18 k	Warm Dim 2700k dims to 1800k (24V only)
2700 k	Incandescent White
3000 k	Halogen White
4000 k	Natural White

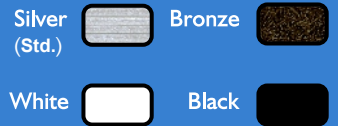
Vashon-RO 1" wide x 1 3/32" tall
I11R (Surface Mount)
I11R-PEN (Pendant)



Vashon-TH 1 3/16" wide x 1 1/32" tall
O29 (Surface Mount)
O29-PEN (Pendant)



Finish Options



Ordering Information

PERFECT FIT™ VASHON series surface mount fixtures comes standard in "Silver" finish with a single 2 foot long lead wire and mounting clips. Pendant fixtures come standard with 2 sets of suspension hardware and 8 foot lead wire. The Vashon-R comes standard with spring clips. Please specify the housing & mounting style, color temperature, brightness level and finished length for each fixture. Fixtures may *optionally* be ordered with extra long leads, or in custom configurations (square, rectangle etc.). Finish options other than silver generally require additional lead time. Please call for availability and pricing.

**Examples: LinF24-106f-PEN-DB-30k-60
LinF24-029f-XB-40k-96-L10**

Model	Lens	Brightness	Color Temp	Fixture Length In Inches	Options
LinF12/24-I04	LinF12/24-I11R	f = frosted	XB=Extra Bright	27k=2700k 40K = 4000k	6 (minimum)
LinF12/24-I06	LinF12/24-I09		DB=Dual Bright	30k=3000k	to
LinF12/24-I11S	LinF12/24-O29		UB=Ultra Bright		192 (maximum)
LinF12/24-I05			WD= Warm Dim	27k-18k	
Pendant versions of above models -PEN	f	Same as above	Same as above	6 to 78	L=lead length (other than 8' std)

Northwest LED

Linear LED lighting

1404 Riverside Dr., Ste. F, Mount Vernon, WA 98273 • 360.422.5387 • www.NorthwestLED.com • info@northwestLED.com