

PERFECT FIT™

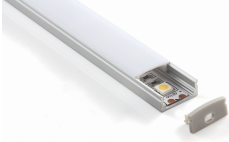
MICRO Fixture Series by Northwest LED

Job Name
Notes

Professional quality, custom LED light fixtures without the custom price!

Housing Options (H x W)

M = Micro 3/8" x 11/16"



R = Recessed Micro
3/8" x 11/16" x 15/16" flange
Inset depth = 1/4"



D = Double Micro
3/8" x 15/16"



F = Flex 1/4" x 3/4"



Fixtures shown in silver with frosted lens

Features



- ETL certified fixtures conform to UL Std 2108 and NEC requirements.
- Color Rendering Index (CRI) of 95 or above. Brings out truer colors.
- Fixtures require a separate LED driver and are dimmable when powered with an approved dimmable driver.
- Custom fabricated in the USA in lengths from 4-inches up to 16 feet.
- Miniature hardwired fixtures are easily hidden under/inside cabinets, and do not require special cables or connectors.
- 2-year warranty when powered with a Northwest LED approved driver. Ask for details.

Diffuser Lens Options

Standard Lenses

Frosted (f) - produces a softer, slightly warmer diffused light and is preferred with reflective surfaces to minimize glare and reflection.

Prismatic (p) - produces a brighter, slightly whiter light and is preferred where maximum light output is desired and the fixture is hidden from normal view.

Specialty Lenses (select models only)

Focus Lens (x) - allows the light to be "focused" into a narrow 30 degree beam for wall wash effects.

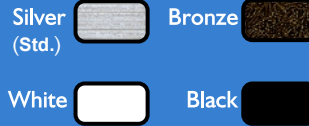
Opal (o) - heavily frosted for maximum light diffusion (reduces light output).

Black (b) - appears black when not lit, best for areas where de-emphasizing the lens is desired (reduces light output).

Micro fixture with Focus Lens



Finish Options



Brightness Options	Voltage DC	Watts/ Ft.	LEDs/ Ft.	Lumen/ Ft.
Soft (SO)	12	1.5	18	130
Medium Bright (MB)	12/24	2.9	36	260
Bright (BR)	12	4	18	350
Extra Bright (XB)	12/24	4.4	36	400
COB (CB)	24	4.6	N/A	521
Ultra Bright (UB)	24	5.5	39	763
Dual Bright (DB) (Double Micro Only)	24	5.9	72	700
Warm Dim (WD)	24	3.9	68	275 (max)

LED Color Options

27-18 k	Warm Dim 2700k dims to 1800k (24V only)
2400 k	Very Warm White (MB only)
2700 k	Incandescent White
3000 k	Halogen White
3500 k	Architectural White
4000 k	Natural White
5000 k	Clinic White

Ordering Information

All MICRO series fixtures come standard with "Silver" finish, a single 2 foot long lead and 3M foam mounting tape. Please specify the housing style, color temperature, brightness level, and finished length for each fixture. Fixtures may *optionally* be ordered with extra long leads, leads on both ends, interconnected with a short "jumper" to allow fixtures to be mounted around corners or with mounting clips. Finish options other than silver generally require additional lead time. Please call for availability and pricing.

Example: LinF12-Mf-BR-30k-34-L10

Voltage/Model	Lens	Brightness	Color Temp	Fixture Length In Inches	Options
LinF12/24-M, R	f = frosted p = prismatic x = focus o = opal b = black	SO=Soft MB=Med Bright BR=Bright XB=Extra Bright CB=COB UB=Ultra Bright WD=Warm Dim	24k=2400k (MB only) 27k=2700k 30k=3000k 35k=3500k 40k=4000k 50k=5000k 27-18k	4 (minimum) to 192 (maximum)	L=lead length (other than 2 foot std.) S=second lead length I=interconnect MC= mounting clips RC=rotating clips
LinF12/24-F	f	SO, MB, BR, XB, CB, UB WD	24k, 27k, 30k, 35k, 40k, 50k 27-18k	4 to 192	L, S, I
LinF24-D	f, p, o, b	DB=Dual BR, MB, XB, CB, UB WD	27k, 30k, 40k 27-18k	4 to 192	L, S, I, MC, RC

Northwest LED

Linear LED lighting

1404 Riverside Dr., Ste. F, Mount Vernon, WA 98273 • 360.422.5387 • www.NorthwestLED.com • info@northwestLED.com